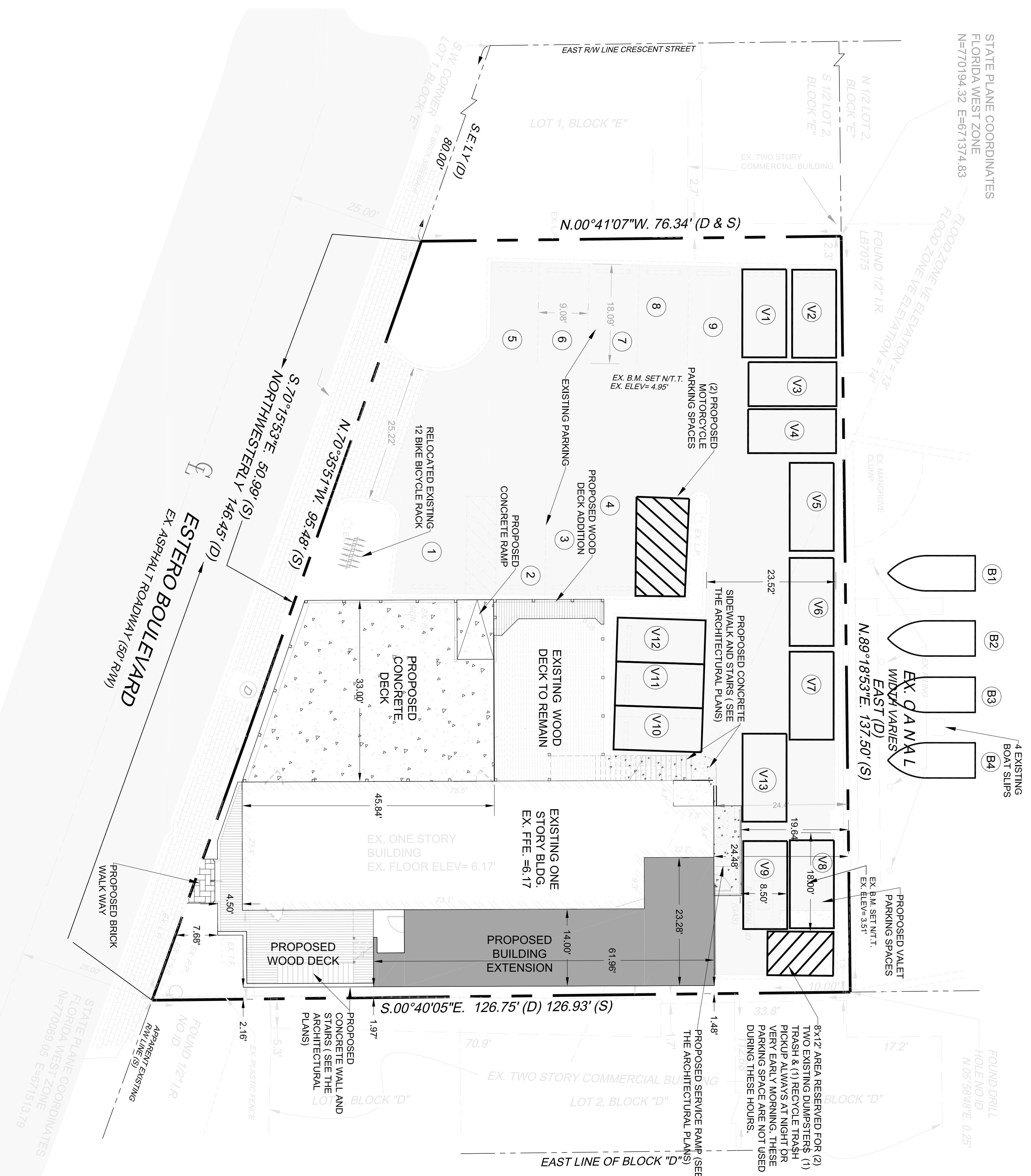
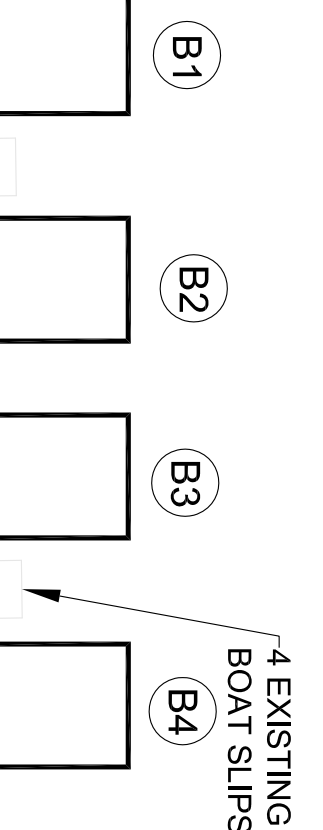


NOTE: THESE PLANS MAY HAVE BEEN REDUCED OR INCREASED IN SIZE BY REPRODUCTIONS. THIS MUST BE CONSIDERED WHEN OBTAINING SCALED DATA.

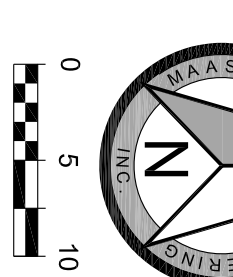


STATE PLANE COORDINATES  
FLORIDA WEST ZONE  
N=770194.32 E=671374.83

FLOOD ZONE VE ELEVATION = 13'  
FLOOD ZONE VE ELEVATION = 14'



PROPOSED VALET PARKING SPACES  
EX. B.M. SET N.T.T. EX. ELEV. = 3.91'



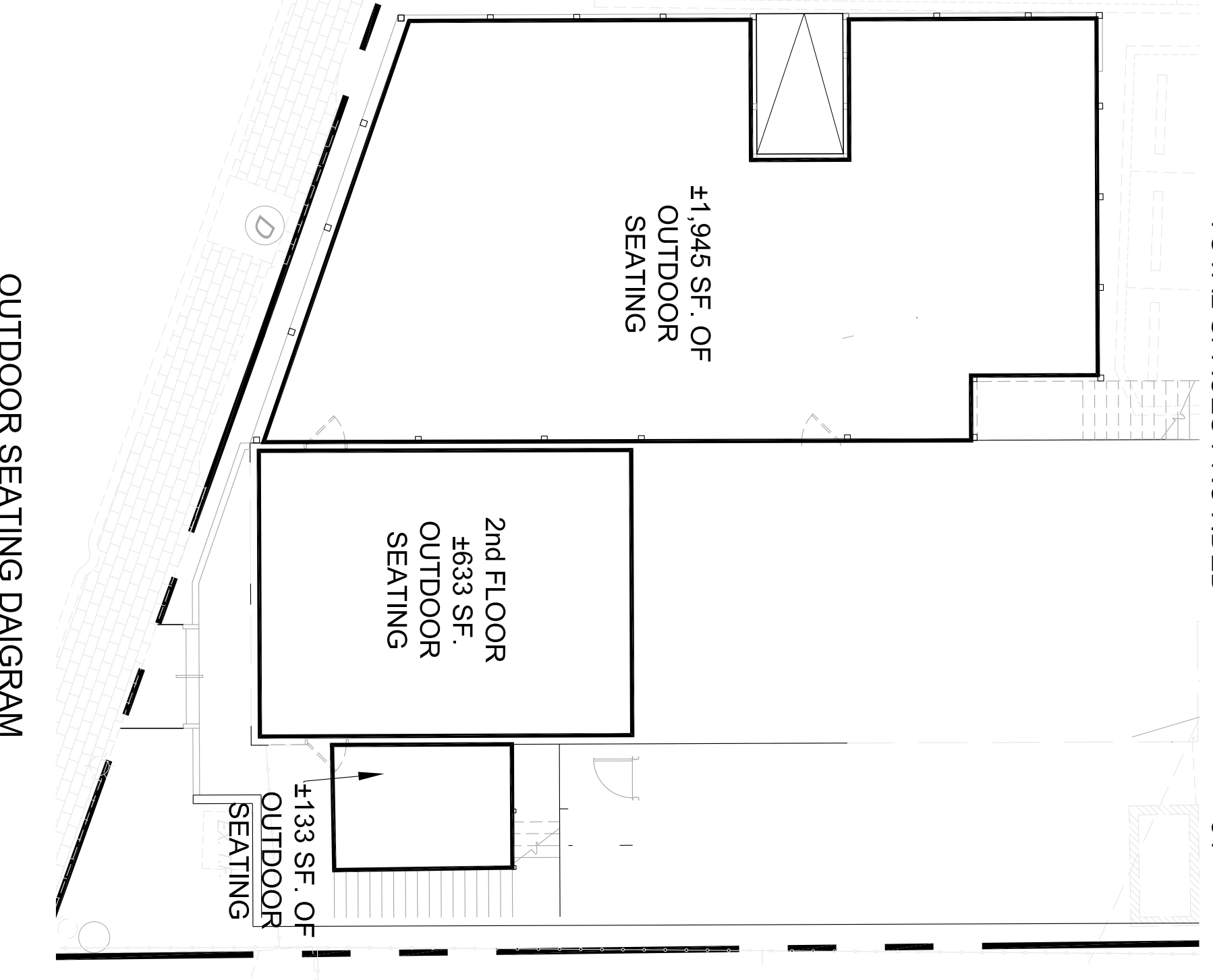
**PARKING REQUIREMENTS**

RESTAURANT  
EXISTING BUILDING: 1,848 SF.  
BUILDING ADDITION: 943 SF.  
OUTDOOR SEATING: 2,711 SF.  
TOTAL: 5,502 SF.

5,502 SF. / 1000 = 5.50  
5.50 X 8 SPACES = 44 SPACES  
TOTAL BAR AREA  
200 SF / 1000 SF = 0.20  
0.20 X 5 SPACES = 1.00 SPACE  
TOTAL SPACES REQUIRED = 45

(33% REDUCTION FOR DOWNTOWN DISTRICT)  
(45 SPACES X .667) = 30.015  
31 SPACES REQUIRED

PARKING SPACES PROVIDED:  
STANDARD PARKING SPACES = 9 SPACES  
(3) 4-BIKE BICYCLE RACKS = 3 SPACES  
(2) MOTORCYCLE PARKING SPACES PROVIDED = 2 SPACES  
(4) BOAT SLIPS FOR 4 PARKING SPACES = 4 SPACES  
(13) VALET SPACES FOR 13 PARKING SPACES = 13 SPACES  
TOTAL SPACES REQUIRED = 31  
TOTAL SPACES PROVIDED = 31



SITE DIMENSION <b>PLAN</b>	<b>FISH BOWL RESTAURANT</b> SECTION 19, TOWNSHIP 46S, RANGE 24E PART OF LOT 1, BLOCK "E" OF CRESCENT PARK FORT MYERS BEACH - LEE COUNTY, FLORIDA	DATE	BY	REVISION DESCRIPTION	DEVELOPER: DEEP DISH DOUGLAS LLC. 326 BUCKLIN STREET LA SALLE, IL. 61301		DATE: 07/01/15
							PROJ.#: 14-140
SHEET 4 OF 10					7370 COLLEGE PARKWAY, SUITE 211 • FORT MYERS, FL 33907 • (239) 362-1605 • (888) 222-2825		FL. LICENSE NUMBER: 58680